

RESEARCH PAPER

The jasmonate pathway mediates salt tolerance in grapevines

Ahmed Ismail^{1,2,*}, Michael Riemann¹ and Peter Nick¹

¹ Molecular Cell Biology, Botanical Institute 1, Karlsruhe Institute of Technology, Kaiserstr. 2, D-76128 Karlsruhe, Germany

² Department of Horticulture, Faculty of Agriculture, Damanhour University, Damanhour, Egypt

* To whom correspondence should be addressed. E-mail: ahmed.ismail@bio.uni-karlsruhe.de

Received 27 September 2011; Revised 18 November 2011; Accepted 1 December 2011

Abstract

Salt stress is a major constraint for many crop plants, such as the moderately salt-sensitive economically important fruit crop grapevine. Plants have evolved different strategies for protection against salinity and drought. Jasmonate signalling is a central element of both biotic and abiotic stress responses. To discriminate stress quality, there must be cross-talk with parallel signal chains. Using two grapevine cell lines differing in salt tolerance, the response of jasmonate ZIM/tify-domain (JAZ/TIFY) proteins (negative regulators of jasmonate signalling), a marker for salt adaptation Na⁺/H⁺ EXCHANGER (NHX1), and markers for biotic defence STILBENE SYNTHASE (StSy) and RESVERATROL SYNTHASE (RS) were analysed. It is shown that salt stress signalling shares several events with biotic defence including activity of a gadolinium-sensitive calcium influx channel (monitored by apoplastic alkalization) and transient induction of JAZ/TIFY transcripts. Exogenous jasmonate can rescue growth in the salt-sensitive cell line. Suppression of jasmonate signalling by phenidone or aspirin blocks the induction of JAZ/TIFY transcripts. The rapid induction of RS and StSy characteristic for biotic defence in grapevine is strongly delayed in response to salt stress. In the salt-tolerant line, NHX1 is induced and the formation of reactive oxygen species, monitored as stress markers in the sensitive cell line, is suppressed. The data are discussed in terms of a model where salt stress signalling acts as a default pathway whose readout is modulated by a parallel signal chain triggered by biotic factors downstream of jasmonate signalling.

Key words: Grapevine (*V. rupestris*, *V. riparia*), Harpin, jasmonic acid, JAZ/TIFY, salt stress.

Introduction

Soil salinity poses a serious problem worldwide, causing global costs equivalent to an estimated US\$11 000 million per year (FAO, 2011). Salt-affected soils negatively affect both the ability of crops to take up water and the availability of micronutrients, while they increase the concentration of toxic ions to plants, and may degrade soil structure. At the cellular and molecular levels, salt stress causes membrane disorganization, metabolic toxicity, formation of reactive oxygen species (ROS), inhibition of photosynthesis, and reduced nutrient acquisition (for reviews, see Hasegawa *et al.*, 2000; Zhu, 2002). Plants have evolved many mechanisms to survive under salinity such as selective accumulation or exclusion of ions, synthesis of compatible solutes, sequestering of ions into separate

compartments, induction of antioxidative enzymes, and adaptive regulation of plant hormones such as abscisic acid (ABA), ethylene (ET), and jasmonates (JAs) (for a review, see Parida and Das, 2005).

JA signalling (for reviews, see Wasternack, 2007; Avanci *et al.*, 2010) has been extensively studied, using biochemical and molecular genetical approaches, in *Arabidopsis thaliana* and other species (Browse, 2009; Chini *et al.*, 2009; Fonseca *et al.*, 2009; for reviews, see Memelink, 2009; Reinbothe, 2009; Schaller and Stintzi, 2009). (+)-7-iso-Jasmonoyl-l-isoleucine (JA-Ile) generated by the JAR1 (Jasmonate-Resistant 1) enzyme represents the endogenous bioactive form of JAs (Staswick and Tiriyaki, 2004; Staswick, 2008; Fonseca *et al.*, 2009). Similar to gibberellin and auxin

signalling, JA-dependent gene activation involves hormone-induced degradation of a transcriptional repressor, the jasmonate ZIM/tify-domain (JAZ/TIFY) proteins (Vanholme *et al.*, 2007). To date, 12 JAZ/TIFY genes have been identified in *A. thaliana* (Chini *et al.*, 2007). The products of these JAZ/TIFY genes share two conserved domains, a ZIM/tify (zinc-finger protein expressed in inflorescence meristem) and a Jas (jasmonate-associated) domain. The ZIM/tify domain mediates homo- and heteromeric hormone-independent interactions between individual JAZ/TIFY proteins (Chini *et al.*, 2009). In contrast, the Jas domain is required for hormone-dependent interactions of JAZ/TIFY with MYC2 and COI1 (Chini *et al.*, 2007; Thines *et al.*, 2007) and for nuclear localization (Grunewald *et al.*, 2009). In response to environmental or developmental signals that stimulate the biosynthesis of JAs, the elevated levels of JA-Ile promote the interaction of JAZ/TIFY repressors with SCF^{COI1}-mediated ubiquitination and subsequently degrade JAZ/TIFY proteins via the 26S proteasome, which in turn releases MYC2 and probably other transcription factors. Activation of MYC2 induces transcription of early JA-responsive genes including JAZ/TIFY genes themselves. The newly synthesized JAZ/TIFY proteins dimerize with MYC2, restore the repression of MYC2, and turn the pathway off (for reviews, see Chico *et al.*, 2008; Chung *et al.*, 2009). They also recruit the Groucho/Tup1-type co-repressor TOPLESS (TPL) and TPL-related proteins (TPRs) through a Novel Interactor of JAZ/TIFY (NINJA). NINJA acts as a transcriptional repressor whose activity is mediated by a functional TPL-binding EAR repression motif, and both NINJA and TPL proteins function as negative regulators of JA responses (Pauwels *et al.*, 2010).

JAs are involved in plant responses to several abiotic and biotic stresses such as wounding (mechanical stress), drought stress, salt stress, ozone, pathogen infection, and insect attack. In addition, JAs regulate many aspects of plant development and growth such as seed germination, fruit ripening, production of viable pollen, root growth, tendrill coiling, photomorphogenesis, leaf abscission, and senescence (Creelman and Mullet, 1995, 1997a, b; Conconi *et al.*, 1996; Rao *et al.*, 2000; Riemann *et al.*, 2003; Haga and Iino, 2004; Ma *et al.*, 2006; Robson *et al.*, 2010; Wang *et al.*, 2011).

The activity of JA responses is regulated by antagonistic cross-talk with salicylic acid (SA) signalling (for reviews, see Lorenzo and Solano, 2005; Balbi and Devoto, 2008). SA and its acetylated form aspirin can suppress the JA-dependent response to wounding and pathogen or insect attack in *A. thaliana* and tomato (Peña-Cortés *et al.*, 1993; Leon-Reyes *et al.*, 2010). In addition to SA, inhibitors of JA biosynthesis have been used to suppress JA-responsive genes. The redox-active compound 1-phenylpyrazolidinone (phenidone) inhibits the activity of lipoxygenases (LOXs) by reducing their active form to an inactive form. This inhibits the octadecanoid pathways at an early stage, and, thus, plant defence (Bruinsma *et al.*, 2010a, b).

Due to these manifold functions, JAs are considered as a master switch for the adaptation to biotic and abiotic factors (for a review, see Wasternack and Hause, 2003).

This leads to the central question of specificity: whether the cellular response to biotic attack is different from the response to abiotic stress. For instance, many plants respond by a plant-specific form of programmed cell death termed the hypersensitive reaction (Jones and Dangl, 2006). This response would be meaningless in response to salt stress. Adaptation to salt stress, in turn, was shown to involve NHX1, the plant homologue of the yeast Na⁺/H⁺ exchanger, suggested to catalyse Na⁺ accumulation in vacuoles (Gaxiola *et al.*, 1999). In concert with other members of this family of transporters, NHX1 plays crucial roles in pH regulation and K⁺ homeostasis, regulating processes from vesicle trafficking and cell expansion to plant development (for a review, see Rodríguez-Rosales *et al.*, 2009). Despite this divergence of downstream responses, biotic and abiotic stress signalling overlap during their early stages. For instance, calcium channels activated by mechanic stimulation (a typical indicator for wounding) have been shown to mediate, in addition, gene activation (*MYP9*, *WRKY1*, *PRI*, and *PR2*) through the pep-13 elicitor derived from an oomycete pathogen (Gus-Mayer *et al.*, 1998). In addition, changes in apoplastic pH, one of the fastest known responses to biotic attack (Felix *et al.*, 1993), are also observed in response to abiotic stresses including drought (for a review, see Felle *et al.*, 2001).

At what point does the abiotic stress signal diverge from defence-related signalling? Is this branching point upstream or downstream of JA activity? To address these questions, two grapevine cell lines that differ in their drought tolerance were used. One line was derived from the wild North American grape *Vitis rupestris* inhabiting sunny rocks and slopes and therefore used in viticulture as a drought-tolerant rootstock, and the other cell line was generated from *Vitis riparia*, a North American species growing in alluvial forests and therefore not adapted to drought. Using these two systems, the role of the JA pathway for salt tolerance was analysed. It is shown that the two cell lines differ in their sensitivity to salt stress, correlated with expression of grapevine JAZ/TIFY and rapid responses of apoplastic pH. Markers for JA signalling, defence, salt adaptation, and oxidative stress in combination with inhibitors of JA synthesis and signalling link salt tolerance with the activity of the JA pathway. It can be further shown that the salt-sensitive *V. riparia* line can be rendered salt tolerant by addition of exogenous JA. Early events are shared between salt-triggered and defence-related signalling, whereas the downstream pattern of gene expression differs, leading to a model of a JA-dependent default pathway triggered by salt stress that is modulated by a parallel pathway activated by pathogen-derived factors.

Materials and methods

Cell lines and treatments

Suspension cell cultures of *V. rupestris* and *V. riparia* generated from leaves (Seibicke, 2002) were used in this experiment. They were cultivated in liquid medium containing 4.3 g l⁻¹ Murashige

and Skoog salts (Duchefa, Haarlem, The Netherlands), 30 g l⁻¹ sucrose, 200 mg l⁻¹ KH₂PO₄, 100 mg l⁻¹ inositol, 1 mg l⁻¹ thiamine, and 0.2 mg l⁻¹ 2,4-dichlorophenoxyacetic acid (2,4-D), pH 5.8. Cells were subcultured weekly; 10 ml of stationary cells were inoculated into 30 ml of fresh medium in 100 ml Erlenmeyer flasks. The cell suspensions were incubated at 25 °C in the dark on an orbital shaker (KS250 basic, IKA Labor Technik, Staufen, Germany) at 150 rpm. To induce cellular responses, cultures were treated at day 5 after subcultivation with different concentrations of sodium chloride (NaCl) aqueous solution, (±)-jasmonic acid (JA) (Sigma-Aldrich, Germany) dissolved in ethanol (EtOH), acetylsalicylic acid (aspirin) (Sigma-Aldrich, Germany) dissolved in dimethylsulphoxide (DMSO), an aqueous solution of the inhibitor 1-phenylpyrazolidinone (phenidone) containing 0.1% polyoxy-ethylene-orbitan monolaurate (Tween-20) (both obtained from Sigma-Aldrich, Germany), or Harpin elicitor [Messenger®, EDEN Bioscience Corporation, Washington, USA; active ingredient: 3% (w/w) Harpin protein]. Negative controls contained the corresponding concentrations of solvent without the active ingredient.

Measurement and quantitative analysis of pH and PCV responses to salt stress

pH changes were followed using a pH meter (Schott handylab, pH 12) connected to a pH electrode (Mettler Toledo, LoT403-M8-S7/120) and recorded by a paperless recorder (VR06; MF Instruments GmbH, Albstadt-Truchtelfingen, Germany) at 1 s intervals. Before treatments, 2 ml of suspension cells (3–4 d after subcultivation) were pre-adapted on an orbital shaker for ~90 min until the pH was stable. To test the effect of salt on pH, cells were treated with NaCl at 0, 10, 20, 30, 40, 50, 85, 120, 155, 200, and 300 mM for 1 h. To block the induction of apoplastic pH, cells were pre-treated with different concentration of GdCl₃ or water for 2 min before the addition of salt.

The pH data were exported to Microsoft Office Excel by the data-acquisition software Observer II_V2.35 (MF Instruments GmbH). The data were fitted based on a Michaelis–Menten equation with T_{pH50} as V_{max}, EC₂₅ as K_m, and the concentration of NaCl as [S]. T_{pH50} was the time required to reach 50% of the maximal pH response. Consequently, the equation yielded K_m as an estimate for the concentration causing 25% of the maximal response (EC₂₅).

The packed cell volume (PCV) as a measure of growth was recorded in response to different concentrations of NaCl (0–200 mM) added directly at subculture. In some experiments, JA (30 µM) was added. The increment in PCV was used as measure of the growth response. Each data point represents the mean from three measurements collected 4 d after subcultivation.

Cloning, sequencing, and sequence analysis of JAZ/TIFY genes

Three putative full-length cDNA clones coding for the grapevine homologues of AtJAZ1, 2, and 3 (TIFY10a, 10b, and 6b, respectively) were isolated from *V. rupestris* using full-length primers (Supplementary Table S1 available at JXB online). A high-fidelity PCR system (Phusion™ DNA Polymerase, NEB) was used with the following PCR parameters: 30 s template initial denaturation at 98 °C, 10 s template denaturation at 98 °C, 15 s primer annealing at 63, 64.1, and 64.1 °C, respectively, and 40 s primer extension at 72 °C for 35 cycles, with a final 5 min extension step at 72 °C. The isolated sequences were compared with the database sequence using the BLAST program (Altschul *et al.*, 1997). The three putative grapevine JAZ/TIFY homologues were inserted into the pJet1.2 vector (CloneJET™ PCR Cloning Kit, Fermentas) and transformed into competent *Escherichia coli* DH5α according to the manufacturer's protocol, yielding pJet1.2 JAZ1/TIFY10a, JAZ2/TIFY10b, or JAZ3/TIFY6b that were isolated using the Roti®-Prep Plasmid MINI (Carl Roth, Karlsruhe, Germany) kit according to the supplier's protocol. The three inserts were sequenced by a commercial provider (GATC,

Konstanz, Germany) and submitted to GenBank under the accession nos JF900329 (*VrJAZ1/TIFY10a*), JF900330 (*VrJAZ2/TIFY10b*), and JF900331 (*VrJAZ3/TIFY6b*). Predicted protein sequences were aligned and analysed using ClustalX (Jeanmougin *et al.*, 1998), and GeneDoc (Nicholas and Nicholas, 1997), and the tree was visualized with the Treeview program (<http://taxonomy.zoology.gla.ac.uk/rod/rod.html>).

Quantification of gene expression

Aliquots (1.5 ml) of cells collected at day 5 after subcultivation were treated with different concentrations of NaCl (0–200 mM) for 30 min and 1 h, sedimented by low-speed centrifugation (3000 rpm; 1 min), and shock-frozen in liquid nitrogen. Samples were homogenized with steel beads (Tissue Lyser, Qiagen/Retsch, Germany), and total RNA extracted using the innuPREP Plant RNA Kit (analytikjena, Jena, Germany) following the manufacturer's protocol. The extracted RNA was treated with a DNA-free DNase (Qiagen, Hildesheim, Germany) to remove potential contamination by genomic DNA. The mRNA was transcribed into cDNA using the M-MuLV RTase cDNA Synthesis Kit (New England BioLabs; Frankfurt am Main, Germany) according to the manufacturer's instructions.

To study gene expression by reverse transcription-PCR (RT-PCR), transcripts were amplified by PCR primers (Supplementary Table S1 at JXB online) with 30 cycles of 1 min denaturation at 94 °C, 30 s annealing at 60 °C (except with *MYC2* which was at 63 °C), and 1 min synthesis at 72 °C. The PCR products were separated by conventional agarose gel electrophoresis after visualization with SybrSafe (Invitrogen, Karlsruhe, Germany). Images of the gels were recorded on a MITSUBISHI P91D screen (Invitrogen) using a digital image acquisition system (SafeImage, Intas, Germany). The bands of the amplicons were quantified using the Image J software (<http://rsbweb.nih.gov/ij/>) and normalized relative to elongation factor 1α as internal standard. The results were plotted as fold increase of transcript abundance as compared with the untreated control. For the time course, cells were treated with 155 mM NaCl for 1, 3, and 6 h, and then RNA was extracted. *JAZ1/TIFY10a*, *COI1*, *MYC2*, *NHX1*, *STILBENE SYNTHASE* (*StSy*), and *RESVERATROL SYNTHASE* (*RS*) expression was measured by RT-PCR at each time point.

To test the effect of JA on the induction of the three putative JAZ/TIFY genes, cells were pre-treated with 0, 10, 20, 30, 40, and 50 µM JA for 1 h or with corresponding concentrations of EtOH as a solvent control. Alternatively, 1 mM aspirin (Peña-Cortés *et al.*, 1993) was added 6 h prior to addition of NaCl, and cells were harvested 1 h later. As a solvent control, corresponding concentrations of DMSO were added instead of aspirin. In a third set of experiments, cells were pre-treated with 2 mM phenidone for 30 min (Bruinsma *et al.*, 2010a) prior to addition of 155 mM NaCl and then harvested 1, 3, and 6 h later. As a control, cells were pre-treated with 0.1% Tween-20 as control 1 or phenidone as control 2 for 30 min before 0 mM NaCl was added for 1 h. All quantifications of gene expression represent the mean from at least three independent experimental series.

Detection of oxidative burst in response to salt stress

ROS were detected under salt stress using dihydroethidium (DHE) according to Tarpey *et al.* (2004). DHE detects essentially superoxide radicals (O₂•⁻). In brief, 1 ml of suspension cells was stabilized for at least 1 h in the culture shaker, and then 30 µM DHE was added. Cells were incubated with the dye for 3–7 min in a dark chamber, on an orbital shaker at room temperature. They were washed three times in MS medium in a dark chamber, on an orbital shaker at room temperature. NaCl (155 mM) was added immediately before observing cells under a fluorescent microscope (AxioImager Z.1, Zeiss, Jena, Germany) equipped with an ApoTome microscope slider through the filter set 43 HE

(excitation at 550 nm, beamsplitter at 570 nm, and emission at 605 nm) for up to 6 h.

Statistical analysis

Three biological replicates were analysed for each treatment. Mean values and the SEM were calculated using Microsoft Excel. *P*-values for differences between treatments were tested by a paired Student *t*-test.

Results

Growth of the two cell lines shows differential NaCl sensitivity

The reference system for the present study was two grapevine cell lines from genotypes that differ in their sensitivity to drought. The NaCl sensitivity in these two cell lines was therefore characterized; a dose–response curve of cell growth (monitored as the increment of PCV, Δ PCV) over different concentrations of NaCl was established for both *V. rupestris* and *V. riparia* cells (Fig. 1A). Since growth under control conditions was higher in *V. rupestris* as compared with *V. riparia* (18.41 ml as compared with 10.3 ml), the increment had to be normalized to the control value. Cells were treated with 0.5–200 mM NaCl for 4 d following the weekly subculture. At low concentrations of NaCl (0–50 mM) the Δ PCV was progressively decreased. In none of the cell lines was any significant growth observed for concentrations of NaCl exceeding 50 mM. In the physiologically relevant dose range between 10 mM and 50 mM NaCl, *V. rupestris* cells grew better than *V. riparia* cells. In this dose range, the curve for *V. rupestris* was shifted by a factor of ~ 1.5 to higher concentrations. To investigate the role of JA in the growth rate at physiologically relevant concentrations of NaCl, 30 μ M JA was added (Fig. 1B, C). JA in the absence of salt stress reduced growth by $\sim 20\%$ in both cell lines as compared with the control. In *V. rupestris*, exogenous JA did not cause significant changes in the response to salt (Fig. 1B). However, in *V. riparia*, JA increased Δ PCV significantly ($P=0.05$) over the corresponding values

measured for salt treatment without JA supplementation (Fig. 1C). This suggests that JA ameliorates the negative impact of salt stress on cell growth.

NaCl induces extracellular alkalization

Extracellular alkalization is one of the earliest defence-related responses (Felix *et al.*, 1993) and was therefore used to monitor potential differences in the response of the two *Vitis* cell lines to NaCl (Fig. 2). In both cell lines, the pH increased rapidly and culminated within 10–20 min after the addition of NaCl, and subsequently decreased. A representative time course is shown for *V. rupestris* in Fig. 2A. At higher concentrations, the maximum was reached later than with lower concentrations. In *V. rupestris*, the peaks were much more pronounced compared with *V. riparia* (Fig. 2B).

To characterize the difference between the two cell lines on a quantitative level, time courses were recorded by varying the concentration of salt. The results were fitted using a Michaelis–Menten equation with $\text{pH}_{\text{max}50}$ (the time when the pH response reached the half-maximum) as an indicator of velocity. When $T_{\text{pH}50}$ was plotted over the concentration of NaCl (Fig. 2C), saturable curves were found that could be well fitted by a Michaelis–Menten function ($R^2=0.840$ for *V. rupestris* and $R^2=0.882$ for *V. riparia*). From these functions, effective concentrations (EC_{25} , inducing 25% of the maximal response) could be calculated to be 80 mM NaCl for *V. rupestris* and 122 mM NaCl for *V. riparia*, respectively. This means that the responsiveness of *V. rupestris* is ~ 1.5 times higher compared with *V. riparia*, consistent with the shift of the dose–response curves for cell growth (Fig. 1A). Since the apoplastic alkalization triggered by biotic stress can be blocked by gadolinium ions (Qiao *et al.*, 2010), the salt-induced pH response was assessed after pre-treatment with GdCl_3 . As shown in Supplementary Fig. S1 at JXB online, 500 μ M could already inhibit salt-induced alkalization in *V. riparia*. For *V. rupestris*, inhibition was observed at a somewhat higher (750 μ M) concentration of GdCl_3 .

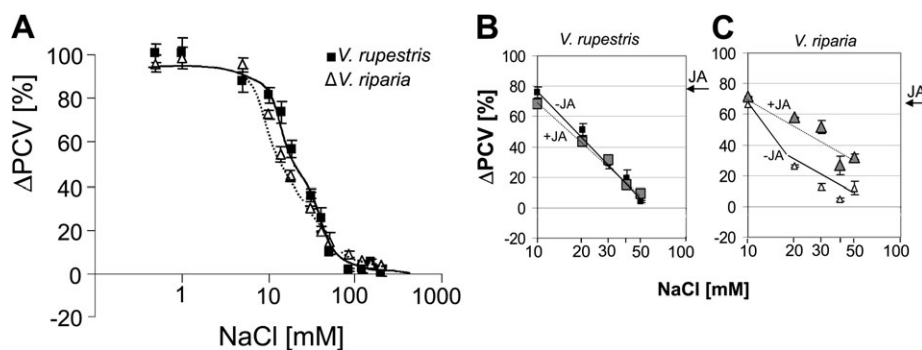


Fig. 1. Response of cell growth to NaCl in *V. rupestris* and *V. riparia* cells. (A) Increment of packed cell volume (Δ PCV) as a measure of cell growth with different concentrations of NaCl. The growth of the untreated control is defined as 100%. Values represent means and standard errors from three measurements. (B and C) Effect of 30 μ M JA on NaCl-dependent inhibition of cell growth in *V. rupestris* (B) or *V. riparia* (C). Values represent means and standard errors from three individual experiments. The grey values represent the combinations of the respective salt concentration with JA; arrows indicate the values obtained for the JA treatment in the absence of salt.

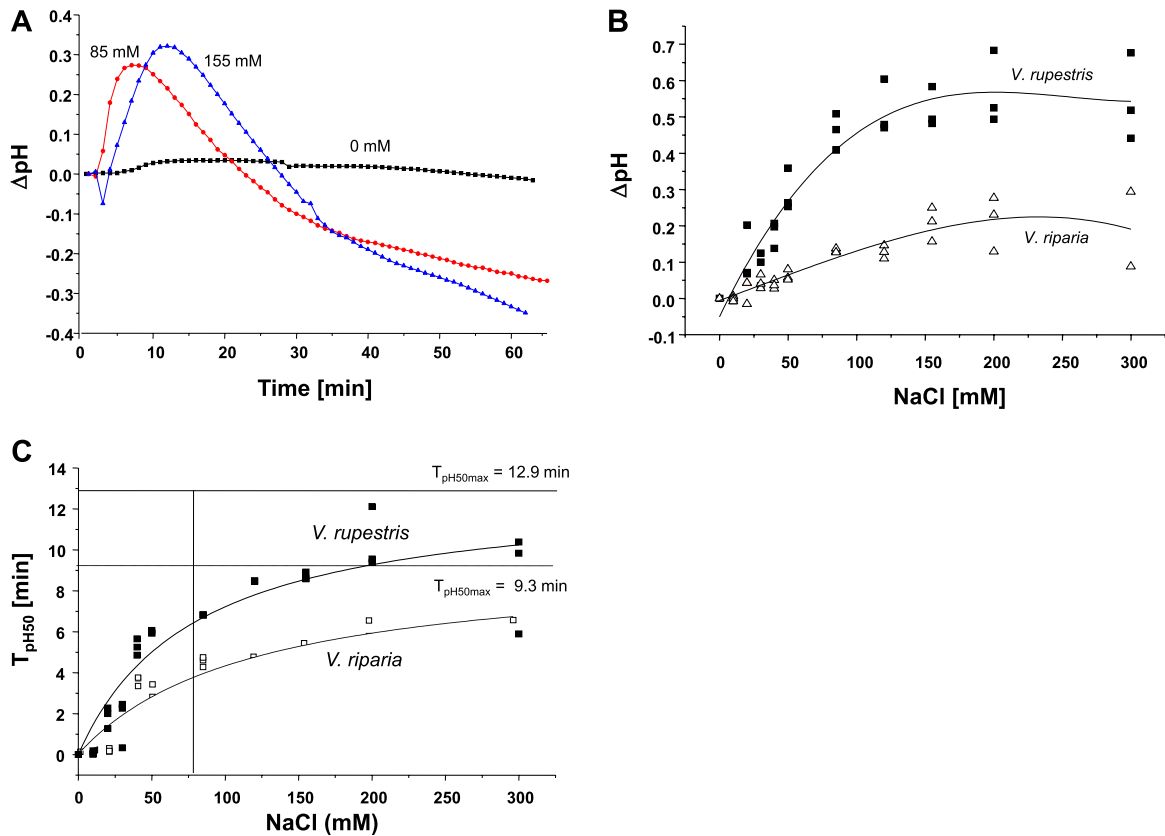


Fig. 2. Response of apoplastic pH to NaCl in grapevine cells. (A) Representative time course for *V. rupestris*. (B) Dose–response curves for the maximal pH change with salt concentration. (C) Kinetic analysis of pH responses in *V. rupestris* (filled squares, solid lines) and *V. riparia* (open squares, dotted lines). The half-maxima of pH to increasing concentrations of NaCl were fitted by a Michaelis–Menten function. T_{pH50max} is defined as time to reach 50% of the maximal response.

Isolation and Identification of JAZ genes

Based on the available sequences of *A. thaliana* JAZ/TIFY proteins, putative homologues in *V. vinifera* cv. ‘Pinot Noir’ were identified by a BLAST search. The phylogenetic tree based on the 12 available JAZ/TIFY protein sequences of *A. thaliana* and their nine putative JAZ/TIFY-LIKE (JAZL/TIFYL) homologues in *V. vinifera* cv. ‘Pinot Noir’ (Fig. 3A) showed five branches (I–V). Four of those contained members from both plant species; branch III did not contain a member from *Vitis*. All *Vitis* JAZL/TIFYL proteins contain a putative N-terminal ZIM/tify domain, and a putative C-terminal Jas domain as conserved domains. The consensus sequence for the ZIM/tify and Jas domains (Fig. 3B) was created using <http://weblogo.berkeley.edu/logo.cgi>. Three of these putative JAZ/TIFYL genes were successfully cloned from the *V. rupestris* cell line using RT-PCR with degenerated primers (Supplementary Table S1 at *JXB* online). Alignment of the three proteins (Fig. 3C) showed that two of those, *VrJAZ1/TIFY10a* (GenBank accession no. JF900329) and *VrJAZ2/TIFY10b* (GenBank accession no. JF900330) were fairly similar and belonged to the same branch of the tree (I, Fig. 3A), whereas the third, *VrJAZ3/TIFY6b* (GenBank accession no. JF900331) was longer and belonged to a different branch (IV, Fig. 3A). The sequences from *V. rupestris* were almost identical to those from *V. vinifera* cv. ‘Pinot

Noir’ (only 2–3 amino acid exchanges in the variable regions of the JAZ/TIFYL proteins).

Impact of NaCl, JA, and aspirin on the expression of JAZ/TIFY genes

Since the three proteins (termed as JAZ1–3/TIFY10a, b, 6b based on their homology to AtJAZ/TIFY proteins) seemed to be the dominant members in *V. rupestris* cells, their expression was investigated under salt-stress by RT-PCR using elongation factor 1 α as the internal reference for quantification. The dose–response dependency of transcript abundance was determined 30 min and 1 h after the addition of NaCl. The preliminary work showed that the expression of *JAZ1/TIFY10a* after 30 min was very weak in both cell lines (Supplementary Fig. S2 at *JXB* online). The results were in agreement with the expression of defence genes under Harpin treatment (Qiao *et al.*, 2010). In contrast, all three genes were induced after addition of salt for 1 h (Fig. 4A shows a representative concentration series; Supplementary Table S2A shows the quantification) with a peak at concentrations around 80–120 mM and a decrease for higher salt concentrations. *JAZ1/TIFY10a* showed significant (Fig. 4A) induction in *V. rupestris* under salt stress as compared with *V. riparia*. The same was observed for *JAZ3/TIFY6b*. *JAZ2/TIFY10b* was slightly induced by

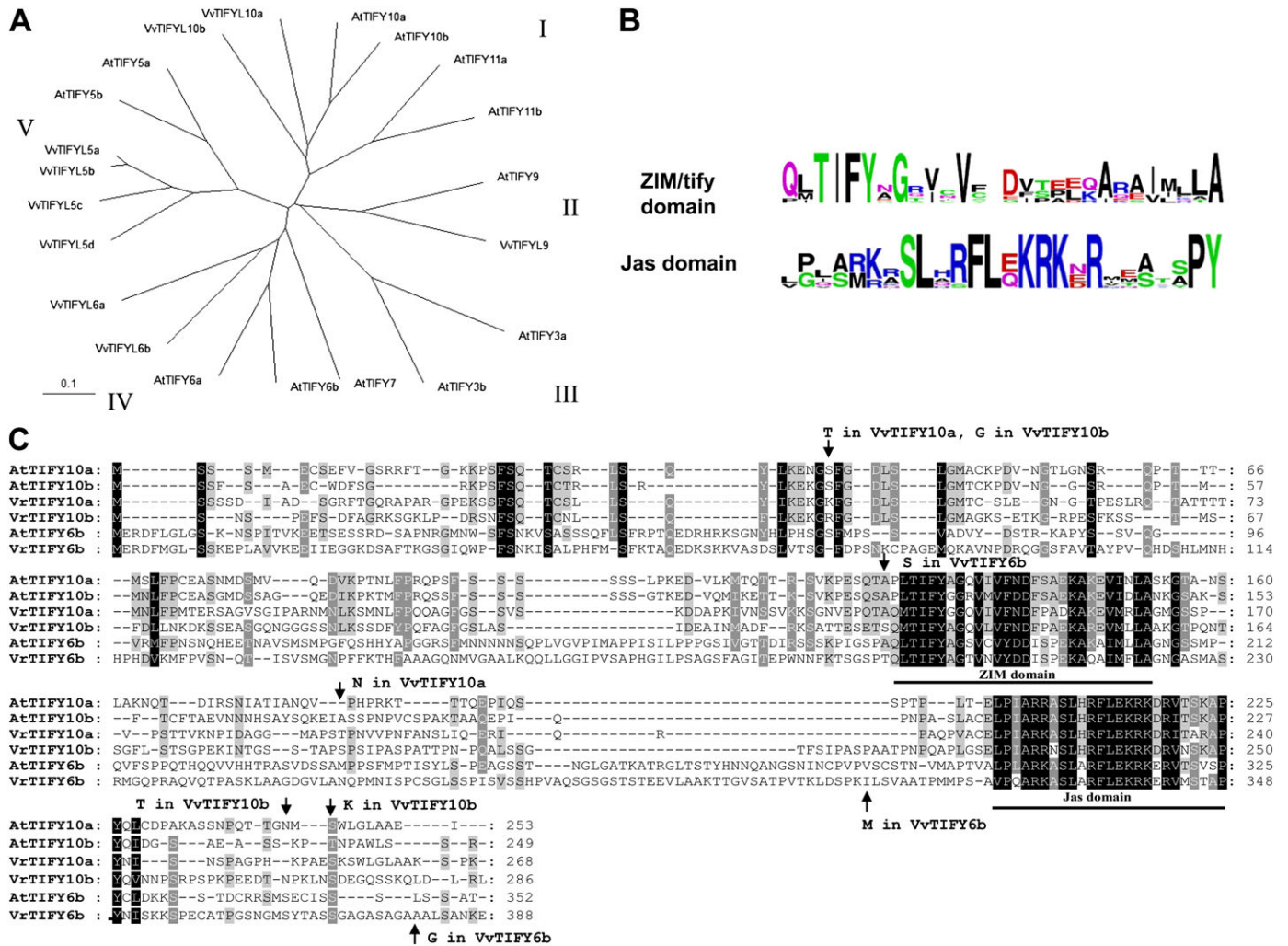


Fig. 3. *In silico* analysis of *Vitis* JAZ/TIFY homologues. (A) Phylogenetic tree based on Neighbor-Joining (NJ) of available JAZ/TIFY sequences from *Arabidopsis thaliana* and their JAZ-LIKE/TIFY-LIKE (JAZL/TIFYL) homologues in *Vitis vinifera* cv. 'Pinot Noir'. NJ, bootstrap values 0.1. (B) Consensus motifs. (C) Alignment with AtJAZ/TIFY-homologues (the sequences of Vr and Vv are almost identical); arrows indicate amino acid differences between *V. rupestris* and *V. vinifera* cv. 'Pinot Noir'.

salt by a similar factor in both cultivars (Fig. 4A; Supplementary Table S2A). These results show a significant (by a factor of ~2) salt induction of *JAZ1/TIFY10a* and *JAZ3/TIFY6b* in *V. rupestris*, which parallels the salt tolerance of growth and the induction of extracellular alkalinization.

To test whether these JAZ/TIFY genes respond to JA, cells were treated for 1 h with different concentrations (0–50 μM) of JA. As a solvent control, cells were treated with a corresponding concentration of EtOH. Figure 4B shows a representative dose series, and Supplementary Table S2B at *JXB* online shows the quantification. *JAZ1/TIFY10a* as well as *JAZ3/TIFY6b* was induced with the increase in the JA concentration to 30 μM, with a tendency to decrease at 40 μM and 50 μM in both cell lines (Fig. 4B; Supplementary Table S2B). *JAZ2/TIFY10b* was only very weakly expressed. Both cell lines responded in a similar way; the difference in induction observed for NaCl (Fig. 4A; Supplementary Table S2A) was not manifest in their response to JA.

To test whether the induction of JAZ/TIFY transcripts by salt can be suppressed by JA antagonists, cells were treated with the same concentrations of NaCl for 1 h after pre-treatment with 1 mM aspirin or a corresponding amount of its solvent solution (DMSO) as a control for 6 h. The induction of these JAZ/TIFY genes by salt treatments was completely suppressed by pre-treatment with aspirin (Fig. 4C shows a representative dose series; Supplementary Table S2C at *JXB* online shows the quantification).

Thus, *JAZ1/TIFY10a* and *JAZ3/TIFY6b* are significantly induced by NaCl in a concentration-dependent manner. This induction is more pronounced in *V. rupestris* as compared with *V. riparia*, especially in the physiologically relevant range around 100 mM NaCl. Both JAZ/TIFY gene transcripts are induced by JA, with the highest expression at 30 μM and without any significant difference between the two cell lines. Aspirin can suppress the induction of JAZ/TIFY transcripts by salt, indicating that the response of transcription requires JA signalling.

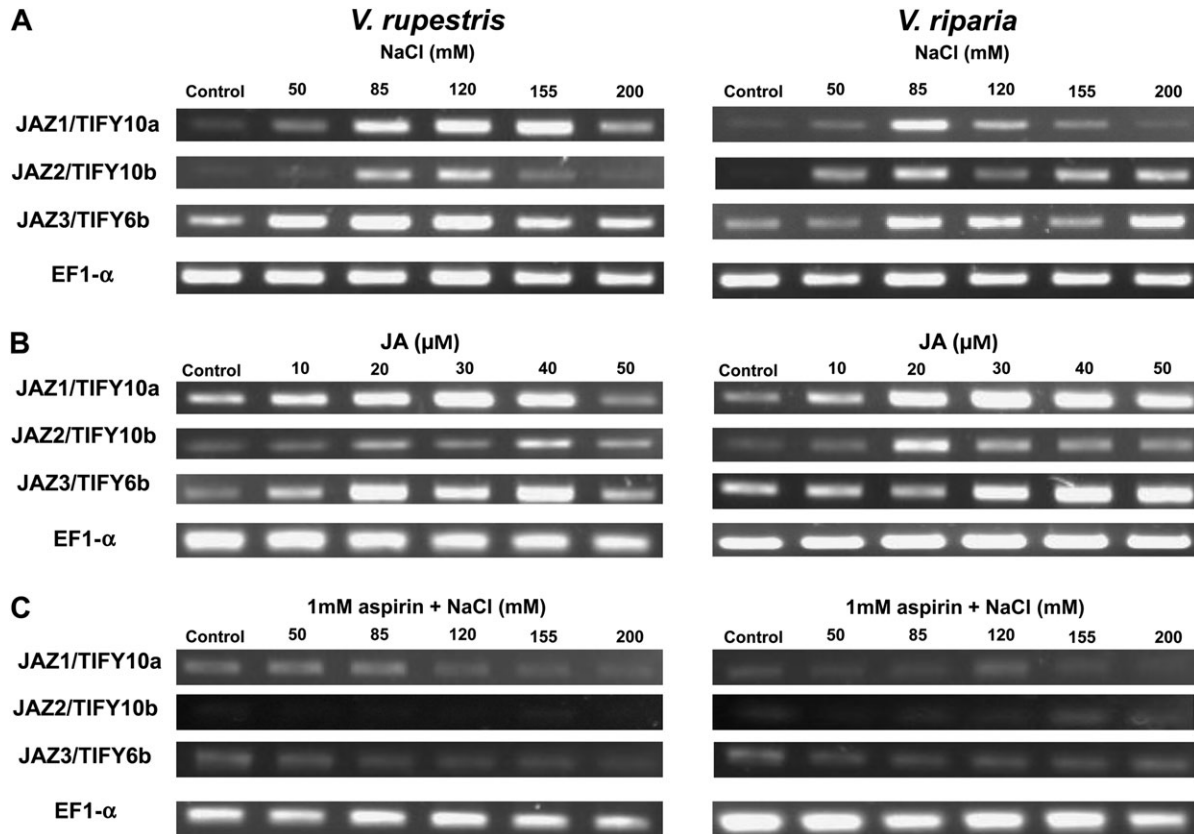


Fig. 4. Response of JAZ/TIFY genes in *V. rupestris* and *V. riparia* to different concentrations of NaCl (A) and JA (B) for 1 h, or to NaCl for 1 h after pre-treatment with aspirin (1 mM) (C) for 6 h. Elongation factor 1 α (EF1- α) was used as the internal standard. One representative example of three independent experiments is shown.

Time courses of gene induction by salt

To gain insight into the sequence of cellular events, the expression of three marker genes for JA signalling (*JAZ1/TIFY10a*, *MYC2*, and *COI1*), a marker for salt adaptation (*NHX1*), and two markers of biotic defence (phytoalexin synthesis genes *StSy* and *RS*) was measured at a concentration of 155 mM NaCl, at which concentration *JAZ1/TIFY10a* was significantly expressed (Fig. 5 shows a representative time series; Supplementary Table S3 at *JXB* online shows the quantifications). In both cell lines, induction of *JAZ1/TIFY10a* was clearly manifest 1 h after addition of NaCl. However, it was significant in *V. rupestris*, and even doubled during the following 2 h, declining subsequently, while in *V. riparia* the induction was much weaker and did not increase after 1 h (Fig. 5; Supplementary Table S3). In contrast, *MYC2* slightly increased after 1 h and then declined over time in both cell lines. *COI1*, encoding the JA receptor, seemed to be increased between 1 h and 3 h after addition of salt (Fig. 5), but this response was not significant (Supplementary Table S3). In contrast, *NHX1*, as a marker for salt adaptation, was clearly induced in *V. rupestris* from 3 h (~3-fold at 6 h) which was not observed in *V. riparia*. The stilbene-related genes *StSy* and *RS*, widely used as markers for biotic defence in *Vitis*, did not respond to salt in *V. riparia*. However, they were clearly induced in *V. rupestris* from 3 h after addition of salt, especially *RS*. These results show a stronger

induction of *JAZ1/TIFY10a* correlated with elevated induction of *NHX1* (salt adaptation) and *RS/StSy* (phytoalexin, biotic defence) in *V. rupestris* as compared with *V. riparia*.

Phenidone can inhibit the induction of *JAZ1/TIFY10a* genes by salt

To investigate further whether the induction of *JAZ1/TIFY10a* by salt requires JA, the synthesis of JA was blocked by phenidone, an inhibitor of LOXs that trigger early steps in the octadecanoid pathway. *Vitis* cells were pre-treated with 2 mM phenidone for 30 min before adding 155 mM NaCl for 1, 3, and 6 h. As a control, cells were pre-treated with 2 mM phenidone or 0.1% Tween-20 for 30 min before 0 mM NaCl was added for 1 h (Fig. 6). Phenidone inhibited the induction of *JAZ1/TIFY10a* by salt stress very efficiently, especially in *V. rupestris*. Similar to the results obtained for aspirin (Fig. 4C), this result suggests that JA signalling (more specifically JA synthesis) is necessary to mediate the induction of *JAZ1/TIFY10a* expression in response to NaCl.

NaCl induces ROS

To test for the negative impact of NaCl on *Vitis* cells, ROS as an indicator of cellular stress were visualized by DHE. DHE is a cell-permeable compound that upon entering the cells interacts with O₂^{•-}, considered to be the earliest ROS

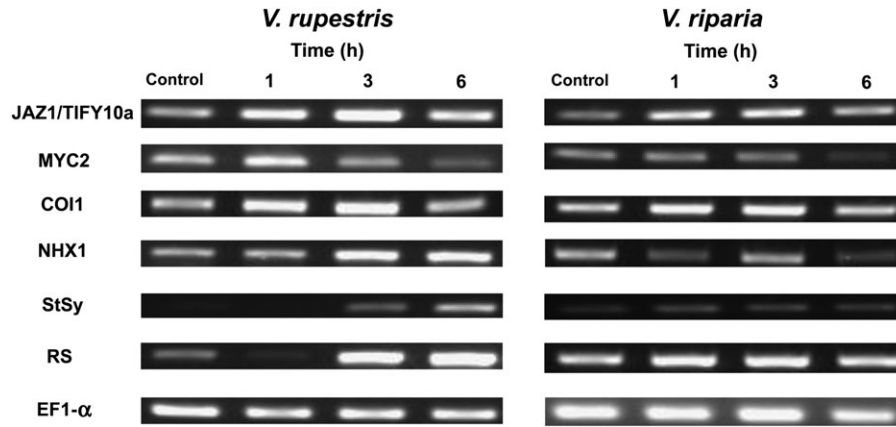


Fig. 5. Time course of induction for transcripts of *JAZ1/TIFY10a*, *MYC2*, *COI1*, *NHX1*, *StSy*, and *RS* by 155 mM NaCl in *V. rupestris* and *V. riparia*. Elongation factor 1 α (EF1- α) was used as internal standard. One representative example of three independent experiments is shown.

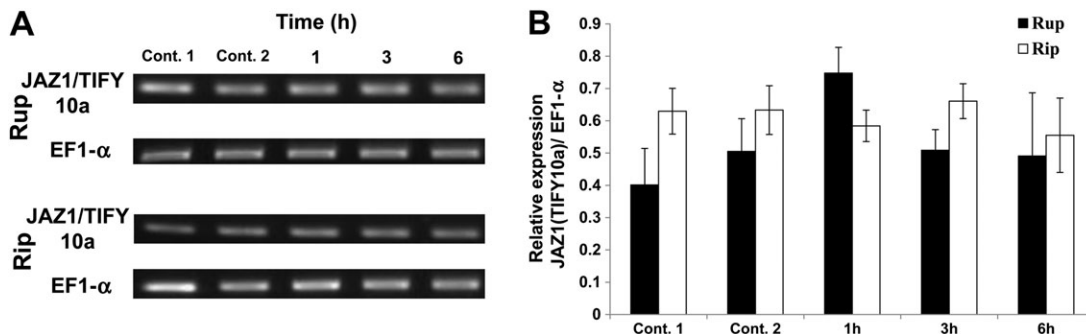


Fig. 6. Effect of phenidone on the induction of *JAZ1/TIFY10a* transcripts under salt stress at different time points in *V. rupestris* (Rup) and *V. riparia* (Rip). (A) Representative time course of transcript abundance of cells pre-treated with phenidone for 30 min in response to 155 mM NaCl for 1, 3, and 6 h. Cells were pre-treated with 0.1% Tween-20 as control 1 or phenidone as control 2 for 30 min before 0 mM NaCl was added for 1 h. (B) Time course of transcript abundance of *JAZ1/TIFY10a* in both cultivars relative to elongation factor 1 α (EF1- α). The data represent averages from three independent experimental series; error bars represent standard errors.

to be generated, to form oxyethidium, which in turn interacts with nucleic acids to emit a bright red colour detectable as red fluorescence (Tarpey *et al.*, 2004). The induction of ROS species was monitored over 6 h in both cell lines. Elevated levels of ROS were induced by salt stress in both cultivars (Fig. 7). However, ROS induction commenced earlier (from 1 h) and reached much higher levels in *V. riparia* as compared with *V. rupestris*, where the earliest indications of elevated ROS levels were not visible before 3 h after addition of salt. Thus, the amplitude and onset of the oxidative burst clearly behave antagonistically to the other tested events (extracellular alkalinization, induction of *JAZ/TIFY*, induction of *NHX1*, induction of *RS*, and growth), because here the response is most pronounced in *V. riparia*, but not in *V. rupestris*.

JAZ1/TIFY10a is induced during biotic stress

Since JA has been shown to trigger phytoalexin synthesis in *Vitis* (Tassoni *et al.*, 2005), a typical biotic stress response, and since salt stress was found to induce *RS* and *StSy* in *V. rupestris*, tests were carried out to determine whether *JAZ1/TIFY10a* can be induced in the absence of salt by

triggering biotic defence. For this purpose the elicitor Harpin that, in *V. rupestris*, can induce the entire programme of defence (Qiao *et al.*, 2010), was used. In fact, a clear induction of *JAZ1/TIFY10a* (Fig. 8) could be observed to a level similar to that observed after treatment with NaCl (Fig. 5; Supplementary Table S3 at *JXB* online). Also *MYC2* showed a slight induction, similar to that observed after salt treatment (Fig. 5; Supplementary Table S3). Thus, the primary events of biotic and salt signalling including extracellular alkalinization, induction of *JAZ1/TIFY10a*, and (slight) induction of *MYC2*, seem to be very similar.

Discussion

Adaptive response versus cellular damage

The following cellular events were observed in response to salt stress (Fig. 9): extracellular alkalinization, which can be inhibited by gadolinium ions, induction of *JAZ1/TIFY10a* and *JAZ3/TIFY6b*, (weak) induction of *MYC2* and *COI1*, induction of *NHX1*, induction of *RS*, formation of ROS, and salt tolerance monitored as an increase in PCV despite

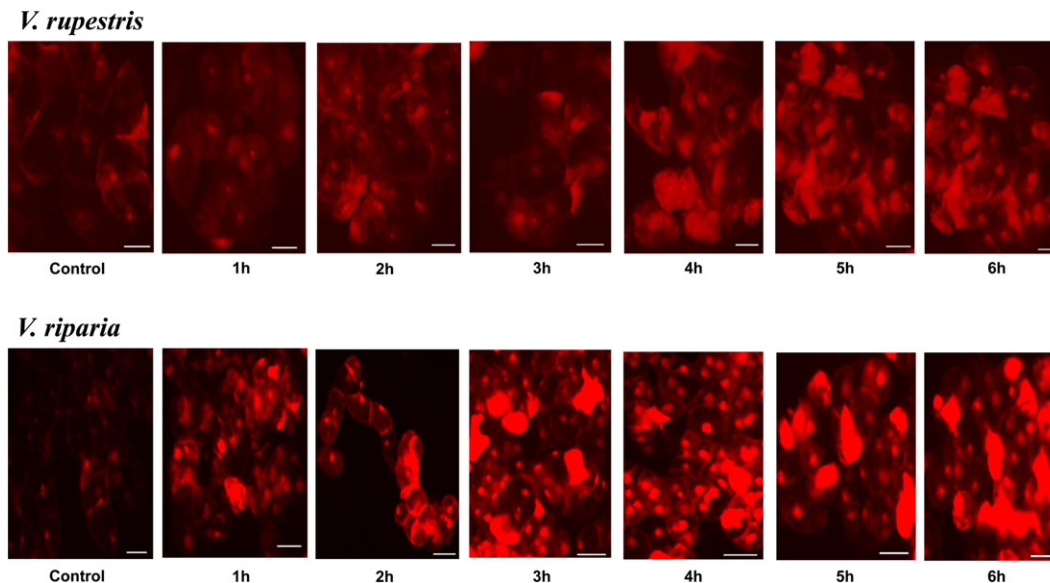


Fig. 7. Effect of 155 mM NaCl on ROS induction in 5-day-old suspension cells of *V. rupestris* and *V. riparia*. Cells were stained with dihydroethidium (DHE), which records superoxide radicals ($O_2^{\bullet-}$). NaCl (155 mM) was added to cells pre-loaded with the dye immediately before microscopic observation, and the signal was followed over 6 h. Size bar 20 μ m.

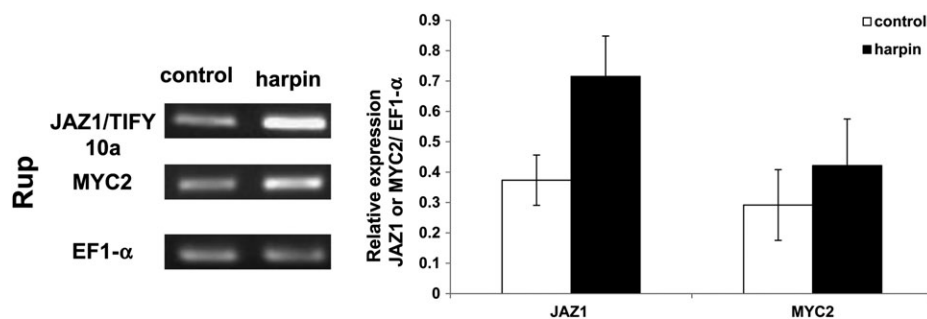


Fig. 8. Effect of Harpin elicitor on the induction of *JAZ1/TIFY10a* and *MYC2* transcripts in *V. rupestris* (Rup). Cells were treated with $9 \mu\text{g ml}^{-1}$ active elicitor for 1 h. The transcript abundance of *JAZ1/TIFY10a* and *MYC2* is given relative to elongation factor 1 α (EF1- α). The data represent averages of three independent experimental series; error bars represent standard errors.

challenge by NaCl. These responses could either be adaptive or they could merely report cellular damage caused by NaCl.

For instance, both biotic and abiotic stress factors induce an oxidative burst. The resulting ROS are highly destructive and can damage DNA, proteins, lipids, and carbohydrates (for a review, see Gill and Tuteja, 2010). On the other hand, ROS can be important signal transduction molecules acting in stress adaptation (for a review, see Miller *et al.*, 2010).

To discriminate between adaptive and damage events, two grapevine cell lines were used that were expected to differ in their salt tolerance, because they originated from two species with different humidity requirements. In fact, the growth of *V. rupestris* cells was found to be more tolerant to NaCl by a factor of 1.5 compared with *V. riparia*. Based on this reference, adaptive responses should be more pronounced in *V. rupestris*, whereas events found to be stronger in *V. riparia* are likely to report damage rather than adaptation. In fact, extracellular alkalinization was

stronger in *V. rupestris*. The same was true for the induction of *JAZ1/TIFY10a*, *JAZ3/TIFY6b*, *NHX1*, and *RS*. In contrast, generation of ROS was stronger in *V. riparia*, suggesting that this oxidative burst represents a manifestation of cellular damage rather than an adaptive response.

JA signalling is necessary and sufficient for JAZ/TIFY induction and salt adaptation

JA signalling plays a crucial role in plant responses to biotic and abiotic stress factors, such as wounding, drought, ozone exposure, pathogen infection, and insect attack (for reviews, see Wasternack, 2007; Avanci *et al.*, 2010). The biosynthetic and signalling pathways underlying these responses have been intensively studied during the last decades. Recently, JAZ/TIFY repressor proteins have been identified as key regulators of JA signalling (Chini *et al.*, 2007; Thines *et al.*, 2007). Three representatives of the *Vitis* JAZ/TIFY family (Fig. 3) were therefore cloned and their expression was

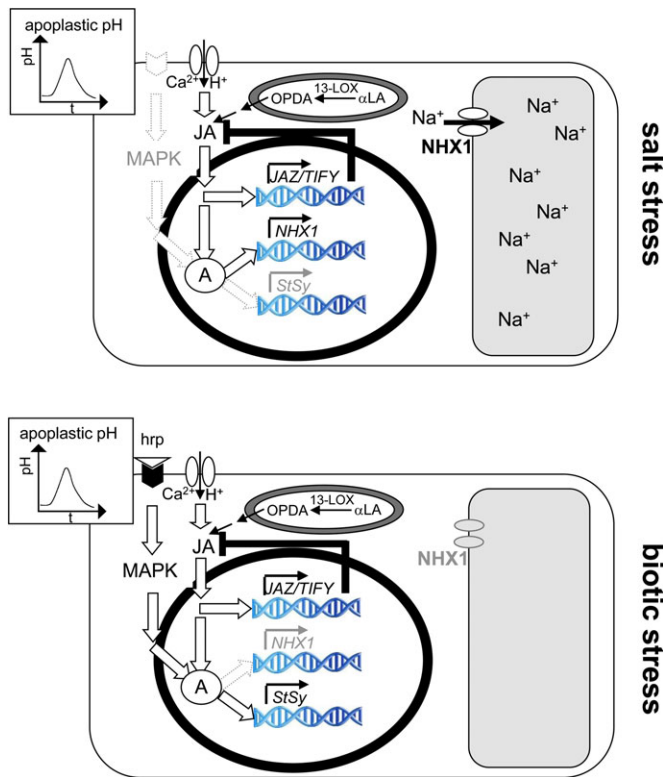


Fig. 9. Model for the signalling induced by salt stress and biotic stress (as induced by the Harpin elicitor) in grapevine. Csk, cytoskeleton; hrp, Harpin elicitor; hrpR, putative Harpin receptor; msc, putative mechanosensitive channel; $\Delta\Psi$, gradient in water potential between the apoplast and cytoplasm triggering salt signalling; 13-LOX, 13-lipoxygenase species triggering jasmonate synthesis by converting α -linoleic acid (α LA); JA, jasmonate-dependent signaling; A, a hypothetical factor required for the activation of defence and salt adaptive genes. For details refer to the Discussion.

followed under NaCl stress (Fig. 4A). A transient induction of two JAZ/TIFY members (JAZ1/TIFY10a and JAZ3/TIFY6b) was observed that was more pronounced in *V. rupestris* (Fig. 4). In parallel, MYC2, a transcription factor whose activity is blocked in the absence of JA-Ile by dimerization with JAZ/TIFY proteins, is slightly elevated, as is the JA receptor gene *COII*, whose transcription is induced in response to JAs. Since the activity of JA signalling is primarily regulated at the post-translational level (e.g. by proteolytic degradation of the inhibitory JAZ/TIFY proteins), these transcript responses of *JAZ1/TIFY10a* and *JAZ3/TIFY6b* as well as of *MYC2* and *COII* are probably not directly involved in the signalling *per se*, but must be interpreted as elements in the complex feedback regulation that tunes the competence for JA signalling with the activity of the signalling pathway (Fig. 9). Nevertheless, these responses can be used as a readout to monitor the activity of JA signalling.

The differential responsiveness of JAZ/TIFY in the two cell lines could be caused either by differential activation of JA synthesis or, alternatively, by differential JA sensitivity of signalling. To differentiate between these two possibilities,

the cell lines were treated with exogenous JA. The application of JA could mimic the effect of salt stress on the induction of JAZ/TIFY transcripts (Fig. 4B), with virtually the same response observed for both cell lines. This suggests that the signalling evoked by JA proceeds in the same manner and with the same intensity. Thus, the differences in salt-induced JAZ/TIFY induction must reside upstream of JA signalling, for instance in different levels of JA synthesis. The salt tolerance of growth in the sensitive *V. riparia* line can be rescued by exogenous JA (Fig. 1C), supporting a model where the activation of JA synthesis probably induces the adaptation to salt stress.

Pre-treatment with aspirin (Fig. 4C) or phenidone (Fig. 6A, B) was able to suppress the induction of JAZ/TIFY genes in response to salt stress, suggesting that salt-induced JA signalling is necessary for the JAZ/TIFY response. Both agents have been used to silence JA-dependent signalling, but have a different mode of action (Fig. 9): SA and its acetylated derivative, aspirin, seem to act as antagonists of JA signalling (reviewed in Lorenzo and Solano, 2005; Balbi and Devoto, 2008), whereas phenidone is thought to block JA synthesis through inhibition of the LOX that converts α -linolenic acid (Bruinsma *et al.*, 2010a, b).

Since aspirin and phenidone inhibit JA signalling by different modes of action, the observed suppression of NaCl-induced induction of JAZ/TIFY transcripts is unlikely to be caused by unspecific side effects of the two compounds but rather by their inhibition of the JA signalling pathway. Thus, JA signalling is necessary and sufficient for JAZ/TIFY induction and cellular adaptation in the context of salt stress.

Salt and defence signalling share several upstream events

Salt signalling shares several events with biotic defence, including apoplastic alkalization (Fig. 2) that is sensitive to gadolinium (Supplementary Fig. S1 at *JXB* online), and transient induction of JAZ/TIFY transcripts (Figs 4, 8). Apoplastic pH has been used to monitor rapid defence responses upstream of gene expression (Felix *et al.*, 1993; Felle and Hanstein, 2002). A widely accepted model (for a review, see Scheel, 1998) proposes that pathogen-derived elicitors bind to a host receptor activating calcium influx. Together with calcium, protons can permeate from the acidic apoplast into the neutral cytoplasm (Jabs *et al.*, 1997). The resulting apoplastic alkalization is therefore a readout for the activity of the calcium channel, but does not convey defence signalling itself (Fig. 9). The time course of apoplastic alkalization under salt stress differed from that observed after Harpin elicitation. After Harpin treatment, the pH increased directly, whereas, in the case of salt stress, it first showed a transient reduction of pH before returning to the initial level and subsequently increasing. This transient drop in pH reduction was more pronounced with increasing salt concentration, such that a longer time was required to reach the initial level and to launch the pH increase. Since the proton influx underlying apoplastic

alkalinization is linked to the activity of a mechanosensitive calcium channel (Gus-Mayer *et al.*, 1998), it is expected to close due to relaxation of membrane strains as a result of plasmolytic shrinkage in the hyperosmotic solution. This would account for the initial decrease. After activation of the channel, a certain time is required until the initial pH is established, such that alkalinization can become manifest. In the *V. rupestris* cell line, the activation of apoplastic alkalinization by the Harpin elicitor could be blocked by gadolinium, a classical inhibitor of mechanosensitive calcium channels (Qiao *et al.*, 2010). Gadolinium sensitivity could be confirmed also for salt-induced alkalinization (Supplementary Fig. S1 at *JXB* online), suggesting that the same mechanosensitive calcium channel is at work. Consistent with this conclusion, in self-reporting *A. thaliana* cells expressing green fluorescent protein (GFP)-based pH and Ca²⁺ indicators, salt and drought stress were shown to trigger apoplastic alkalinization as well as calcium influx (Gao *et al.*, 2004). Activation of calcium influx is followed by activation of JA synthesis (blocked by phenidone) and JA signalling (blocked by aspirin), culminating in the induction of JAZ/TIFY transcripts. All of these early events are more pronounced in *V. rupestris* as compared with *V. riparia* on the background of a comparable JA responsiveness of JA signalling (Fig. 4B). This indicates that the difference between the two cell lines resides in the sensitivity of osmotic sensing. Whether *V. rupestris* is responding more efficiently because it harbours a higher density of mechanosensitive calcium channels or whether the activity of the individual channels is elevated remains to be elucidated.

Salt and defence signalling diverge in their downstream events

Whereas early responses of transcription to salt and Harpin (JAZ1/TIFY10a and MYC2) showed a similar pattern (compare Figs 5 and 8), there were clear differences in the expression of downstream genes. For instance, transcripts for the phytoalexin synthesis genes *StSy* and *RS* were induced much later after salt stress (from 3 h) as compared with a much earlier induction (~0.5 h) after Harpin treatment (Qiao *et al.*, 2010). Moreover, the pattern of transcript abundance is inverted; whereas in the case of Harpin *StSy* is most responsive, for salt stress it was *RS* that showed the strongest induction. These differences suggest that both kinds of stresses use separate pathways. In addition to phytoalexin synthesis, salt stress initiates adaptive processes, such as the synthesis of NHX1 that is observed from 3 h in *V. rupestris*. NHX1 sequesters Na⁺ into the vacuole and thus contributes to osmotic adjustment by maintaining water uptake under saline conditions (for a review, see Zhu, 2003). As a consequence of this adaptation, cellular damage monitored by fluorescent detection of superoxide radicals was clearly ameliorated in *V. rupestris* as compared with *V. riparia*, where superoxide radicals were dramatically increased from 2 h after the onset of salt stress (Fig. 7). Again, this response clearly diverges from the situation observed for biotic stress: in the

V. rupestris cell line, Harpin treatment was found to induce a massive oxidative burst. This seems to be connected to the oxidation of resveratrol into its highly toxic derivative δ -viniferin (Chang *et al.*, 2011), probably involved in the execution of hypersensitive cell death. Programmed cell death is an efficient strategy to block a biotic intruder, but would be completely inappropriate for salt adaptation.

When salt and biotic signalling overlap in their upstream events (gadolinium-sensitive calcium influx accompanied by apoplastic alkalinization and induction of JA signalling), but differ in their downstream output (salt stress producing induction of salt sequestration, late induction of stilbene metabolism, predominance of *RS*, and suppression of the oxidative burst; and Harpin-triggered biotic signalling producing early induction of stilbene metabolism, predominance of *StSy*, and induction of the oxidative burst), there must be a parallel pathway activated during biotic signalling that modulates the transcriptional responses to JA signalling (Fig. 9). A good candidate is the mitogen-activated protein (MAP) kinase pathway, which is triggered by Harpin independently of calcium influx (Lee *et al.*, 2001). A simple mechanism to switch between salt adaptation and biotic defence would be the JA-dependent formation or activation of a transcriptional regulator (depicted as A in Fig. 9) that is recruited to JA-responsive genes acting in salt adaptation, but can form a complex with the output from the biotically triggered MAP kinase pathway and will then be recruited to JA-responsive genes acting in biotic defence. Thus, salt signalling would act as a default pathway that can be modulated by biotic signalling towards activation of defence genes.

Supplementary data

Supplementary data are available at *JXB* online.

Figure S1. The effect of GdCl₃ (an inhibitor of stretch-activated ion channels) on extracellular alkalization induced by NaCl. The cells of *V. rupestris* or *V. riparia* were pre-incubated for 2 min with different concentrations of GdCl₃ before 155 mM NaCl was added.

Figure S2. Response of JAZ1/TIFY10a genes in *V. rupestris* and *V. riparia* to different concentrations of NaCl for 30 min. Elongation factor 1 α (EF1- α) was used as internal standard.

Table S1. Designations, sequences, and literature references for the oligonucleotide primers used to amplify the marker sequences used in this study

Table S2. Dose dependency of transcript abundance for JAZ1, 2, and 3 (TIFY10a, b, and 6b, respectively) relative to elongation factor 1 α (EF) for increasing concentrations of NaCl (A), JA (B), or NaCl after pre-treatment with 1 mM aspirin or its solvent solution (C) in *V. rupestris* and *V. riparia* cells.

Table S3. Time course of transcript abundance for JAZ1/TIFY10a, MYC2, COI1, NHX1, *StSy*, and *RS* relative to elongation factor 1 α (EF). Effect of 155 mM NaCl on the induction of JAZ1/TIFY, MYC2, COI1, NHX1, *StSy*, and *RS* in *V. rupestris* and *V. riparia* cells.

Acknowledgements

AI was supported by the German Egyptian Research Long-term Scholarship 'GERLS' program. Dr Hanns-Heinz Kassemeyer (State Institute of Viticulture, Freiburg) is acknowledged for the kind gift of the cell lines, and Sabine Purper for competent support in the maintenance of the cell lines.

References

- Avanci NC, Luche DD, Goldman GH, Goldman MHS.** 2010. Jasmonates are phytohormones with multiple functions, including plant defense and reproduction. *Genetics and Molecular Research* **9**, 484–505.
- Balbi V, Devoto A.** 2008. Jasmonate signalling network in *Arabidopsis thaliana*: crucial regulatory nodes and new physiological scenarios. *New Phytologist* **177**, 301–318.
- Browse J.** 2009. The power of mutants for investigating jasmonate biosynthesis and signaling. *Phytochemistry* **70**, 1539–1546.
- Bruinsma M, van Broekhoven S, Poelman EH, Posthumus MA, Müller MJ, van Loon JJA, Dicke M.** 2010a. Inhibition of lipoxygenase affects induction of both direct and indirect plant defences against herbivorous insects. *Oecologia* **162**, 393–404.
- Bruinsma M, van Loon JJA, Dicke M.** 2010b. Increasing insight into induced plant defense mechanisms using elicitors and inhibitors. *Plant Signaling and Behavior* **5**, 271–274.
- Chang X, Heene E, Qiao F, Nick P.** 2011. The phytoalexin resveratrol regulates the initiation of hypersensitive cell death in *Vitis* cell. *PLoS One* **6**, e26405.
- Chico JM, Chini A, Fonseca S, Solano R.** 2008. JAZ repressors set the rhythm in jasmonate signaling. *Current Opinion in Plant Biology* **11**, 486–494.
- Chini A, Fonseca S, Chico JM, Fernández-Calvo P, Solano R.** 2009. The ZIM domain mediates homo- and heteromeric interactions between *Arabidopsis* JAZ proteins. *The Plant Journal* **59**, 77–87.
- Chini A, Fonseca S, Fernández G, et al.** 2007. The JAZ family of repressors is the missing link in jasmonate signalling. *Nature* **448**, 666–671.
- Chung HS, Niu Y, Browse J, Howe GA.** 2009. Top hits in contemporary JAZ: an update on jasmonate signaling. *Phytochemistry* **70**, 1547–1559.
- Conconi A, Smerdon MJ, Howe GA, Ryan CA.** 1996. The octadecanoid signaling pathway in plants mediates a response to ultraviolet radiation. *Nature* **383**, 826–829.
- Creelman RA, Mullet JE.** 1995. Jasmonic acid distribution and action in plants: regulation during development and response to biotic and abiotic stress. *Proceedings of the National Academy of Sciences, USA* **92**, 4114–4119.
- Creelman RA, Mullet JE.** 1997a. Biosynthesis and action of jasmonates in plants. *Annual Review of Plant Physiology and Plant Molecular Biology* **48**, 355–381.
- Creelman RA, Mullet JE.** 1997b. Oligosaccharins, brassinolides, and jasmonates: nontraditional regulators of plant growth, development, and gene expression. *The Plant Cell* **9**, 1211–1223.
- FAO.** 2011. FAO Land and Plant Nutrition Management Service. <http://www.fao.org/ag/agl/agll/spush>.
- Felix G, Regenass M, Boller T.** 1993. Specific perception of subnanomolar concentrations of chitin fragments by tomato cells: induction of extracellular alkalization, changes in protein phosphorylation, and establishment of a refractory state. *The Plant Journal* **4**, 307–316.
- Felle H.** 2001. pH: signal and messenger in plant cells. *Plant Biology* **3**, 577–591.
- Felle HH, Hanstein S.** 2002. The apoplastic pH of the sub-stomatal cavity of *Vicia faba* leaves and its regulation responding to different stress factors. *Journal of Experimental Botany* **53**, 1–10.
- Fonseca S, Chico JM, Solano R.** 2009. The jasmonate pathway: the ligand, the receptor and the core signalling module. *Current Opinion in Plant Biology* **12**, 539–547.
- Gao D, Knight MR, Trewavas AJ, Sattelmacher B, Plieth C.** 2004. Self-reporting *Arabidopsis* expressing pH and [Ca²⁺] indicators unveil ion dynamics in the cytoplasm and in the apoplast under abiotic stress. *Plant Physiology* **134**, 898–908.
- Gaxiola RA, Rao R, Sherman A, Grisafi P, Alper SL, Fink GR.** 1999. The *Arabidopsis thaliana* proton transporters, AtNHX1 and Avp1, can function in cation detoxification in yeast. *Proceedings of the National Academy of Sciences, USA* **96**, 1480–1485.
- Gill SS, Tuteja N.** 2010. Reactive oxygen species and antioxidant machinery in abiotic stress tolerance in crop plants. *Plant Physiology and Biochemistry* **48**, 909–930.
- Grunewald W, Vanholme B, Pauwels L, Plovie E, Inze D, Gheysen G, Goossens A.** 2009. Expression of the *Arabidopsis* jasmonate signaling repressor JAZ1/TIFY10A is stimulated by auxin. *EMBO Reports* **10**, 923–928.
- Gus-Mayer S, Naton B, Hahlbrock K, Schmelzer E.** 1998. Local mechanical stimulation induces components of the pathogen defense response in parsley. *Proceedings of the National Academy of Sciences, USA* **95**, 8398–8403.
- Haga K, Iino M.** 2004. Phytochrome-mediated transcriptional up-regulation of allene oxide synthase in rice seedlings. *Plant and Cell Physiology* **45**, 119–128.
- Hasegawa PM, Bressan RA, Zhu JK, Bohnert HJ.** 2000. Plant cellular and molecular responses to high salinity. *Annual Review of Plant Physiology and Plant Molecular Biology* **51**, 463–499.
- Jabs T, Tschöpe M, Colling C, Hahlbrock K, Scheel D.** 1997. Elicitor stimulated ion fluxes and O₂⁻ from the oxidative burst are essential components in triggering defense gene activation and phytoalexin synthesis in parsley. *Proceedings of the National Academy of Sciences, USA* **94**, 4800–4805.
- Jeanmougin F, Thompson JD, Gouy M, Higgins DG, Gibson TJ.** 1998. Multiple sequence alignment with Clustal X. *Trends in Biochemical Science* **23**, 403–405.
- Jones JDG, Dangl JL.** 2006. The plant immune system. *Nature* **444**, 323–329.
- Lee J, Klessig DF, Nürnberger T.** 2001. A Harpin binding site in tobacco plasma membranes mediates activation of the pathogenesis-related gene HIN1 independent of extracellular calcium but dependent on mitogen-activated protein kinase activity. *The Plant Cell* **13**, 1079–1093.

- Leon-Reyes A, Van der Does D, De Lange ES, Delker C, Wasternack C, Van Wees SCM, Ritsema T, Pieterse CMJ.** 2010. Salicylate-mediated suppression of jasmonate-responsive gene expression in Arabidopsis is targeted downstream of the jasmonate biosynthesis pathway. *Planta* **232**, 1423–1432.
- Lorenzo R, Solano R.** 2005. Molecular players regulating the jasmonate signalling network. *Current Opinion in Plant Biology* **8**, 532–540.
- Ma S, Gong Q, Bohnert HJ.** 2006. Dissecting salt stress pathways. *Journal of Experimental Botany* **57**, 1097–1107.
- Memelink J.** 2009. Regulation of gene expression by jasmonate hormones. *Phytochemistry* **70**, 1560–1570.
- Miller G, Suzuki N, Ciftci-Yilmaz S, Mittler R.** 2010. Reactive oxygen species homeostasis and signaling during drought and salinity stresses. *Plant, Cell and Environment* **33**, 453–467.
- Mur LAJ, Naylor G, Warner SAJ, Sugars JM, White RF, Draper J.** 1996. Salicylic acid potentiates defence gene expression in leaf tissue exhibiting acquired resistance to pathogen attack. *The Plant Journal* **9**, 559–571.
- Nicholas KB, Nicholas HBJ.** 1997. GeneDoc: a tool for editing and annotating multiple sequence alignments. *Distributed by the authors*.
- Parida AK, Das AB.** 2005. Salt tolerance and salinity effects on plants: a review. *Ecotoxicology and Environmental Safety* **60**, 324–349.
- Pauwels L, Barbero GF, Geerinck J, et al.** 2010. NINJA connects the co-repressor TOPLESS to jasmonate signalling. *Nature* **464**, 788–791.
- Peña-Cortès H, Albrecht T, Prat S, Weiler EW, Willmitzer L.** 1993. Aspirin prevents wound-induced gene expression in tomato leaves by blocking jasmonic acid biosynthesis. *Planta* **191**, 123–128.
- Qiao F, Chang X, Nick P.** 2010. The cytoskeleton enhances gene expression in the response to the Harpin elicitor in grapevine. *Journal of Experimental Botany* **61**, 4021–4031.
- Rao MV, Lee H, Creelman RA, Mullet JE, Davis KR.** 2000. Jasmonic acid signaling modulates ozone-induced hypersensitive cell death. *The Plant Cell* **12**, 1633–1646.
- Reinbothe C, Springer A, Samol I, Reinbothe S.** 2009. Plant oxylipins: role of jasmonic acid during programmed cell death, defence and leaf senescence. *FEBS Journal* **276**, 4666–4668.
- Riemann M, Muller A, Korte A, Furuya M, Weiler EW, Nick P.** 2003. Impaired induction of the jasmonate pathway in the rice mutant hebiba. *Plant Physiology* **133**, 1820–1830.
- Robson F, Okamoto H, Patrick E, Harris S-R, Wasternack C, Brearley C, Turner JG.** 2010. Jasmonate and phytochrome A signaling in Arabidopsis wound and shade responses are integrated through JAZ1 stability. *The Plant Cell* **22**, 1143–1160.
- Rodríguez-Rosales MP, Gálvez FJ, Huertas R, Aranda MN, Baghour M, Cagnac O, Venema K.** 2009. Plant NHX cation/proton antiporters. *Plant Signaling and Behaviour* **4**, 265–276.
- Schaller A, Stintzi A.** 2009. Enzymes in jasmonate biosynthesis. Structure, function, regulation. *Phytochemistry* **70**, 1532–1538.
- Scheel D.** 1998. Resistance response physiology and signal transduction. *Current Opinion in Plant Biology* **1**, 305–310.
- Seibicke T.** 2002. Untersuchungen zur induzierten Resistenz an Vitis spec. PhD thesis. University of Freiburg.
- Staswick PE.** 2008. JAZing up jasmonate signaling. *Trends in Plant Science* **13**, 66–71.
- Staswick PE, Tiryaki I.** 2004. The oxylipin signal jasmonic acid is activated by an enzyme that conjugates it to isoleucine in Arabidopsis. *The Plant Cell* **16**, 2117–2127.
- Tarpey MM, Wink DA, Grisham MB.** 2004. Methods for detection of reactive metabolites of oxygen and nitrogen: *in vitro* and *in vivo* considerations. *American Journal of Physiology. Regulatory Integrative and Comparative Physiology* **286**, 431–444.
- Tassoni A, Fornalé S, Franceschetti M, Musiani F, Micheal AJ, Perry B, Bagni N.** 2005. Jasmonates and Na-orthovanadate promote resveratrol production in Vitis vinifera L. cv. Barbera cell cultures. *New Phytologist* **166**, 895–905.
- Thines B, Katsir L, Melotto M, Niu Y, Mandaokar A, Liu G, Nomura K, He SY, Howe GA, Browse J.** 2007. JAZ repressor proteins are targets of the SCFCO11 complex during jasmonate signalling. *Nature* **448**, 661–665.
- Vanholme B, Grunewald W, Bateman A, Kohchi T, Gheysen G.** 2007. The tify family previously known as ZIM. *Trends in Plant Science* **12**, 239–244.
- Wang JG, Chen CH, Chien CT, Hsieh HL.** 2011. FAR-RED INSENSITIVE219 modulates CONSTITUTIVE PHOTOMORPHOGENIC1 activity via physical interaction to regulate hypocotyl elongation in Arabidopsis. *Plant Physiology* **156**, 631–646.
- Wasternack C.** 2007. Jasmonates: an update on biosynthesis, signal transduction and action in plant stress response, growth and development. *Annals of Botany* **100**, 681–697.
- Wasternack C, Hause B.** 2003. Jasmonates and octadecanoids: signals in plant stress responses and development. *Progress in Nucleic Acid Research and Molecular Biology* **72**, 165–221.
- Zhu J.** 2002. Salt and drought stress signal transduction in plants. *Annual Review of Plant Biology* **53**, 247–73.
- Zhu J.** 2003. Regulation of ion homeostasis under salt stress. *Current Opinion in Plant Biology* **6**, 441–445.